

Piano Concerto No. 1 "Jigsaw Concerto"

I Puzzled Jigsaw

Yen-Lin Goh

$\text{♩} = 96$

pizz. *mp* arco *subito f* pizz. *mp*

7 arco *subito f* pizz. *mp* arco *subito f* pizz. *mp*

12 arco *subito f* pizz. *leggiero* arco *pesante* *subito f*

17 **A** pizz. *mp* arco *subito f* pizz. *mp*

23 arco *subito f* pizz. *mp* arco *subito f* pizz. *mp*

28 arco *subito f* pizz. *mf* **B** **27**

poco rit. $\text{♩} = 85-90$

59 // **C** **6** *poco rit.*

$\text{♩} = 55$ **D** **8** *allargando.* **2**

78 Piano improvisation on previous material [3-4 min.]



Tempo Prima

♩ = 96

79

E arco



85



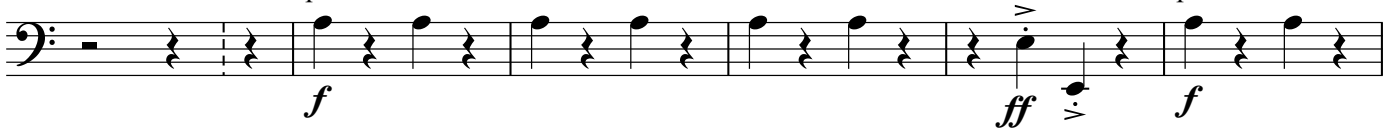
Più mosso

♩ = 98-100

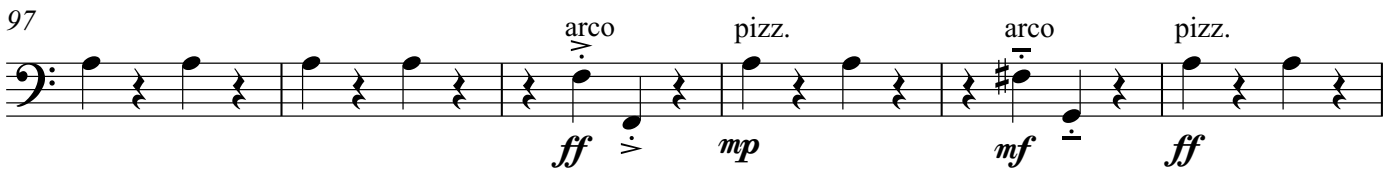
91

F

pizz.



97



accel. molto accel.

103



112

